

Welcome

Hello and welcome to the spring edition of the Nature's Calendar newsletter! Spring has well and truly sprung, across the UK the birds are singing, tree buds are bursting and the first spring flowers are opening.

Have you spotted any flowering bluebells? At the time I'm writing this (8th April) we already have 114 flowering bluebell records from across the UK!

Bluebells are a firm favourite for our volunteers to record, we've got a hunch that the average UK bluebell flowering may be earlier than ever this spring, but we'll only know this if you let us know when they first started flowering near you.

A warm welcome to new volunteers.

Within these newsletters we share project updates or news, insights into your records, reminders of what to look out for and highlights from our blog. We are here to support you in your role, if you have any questions at any point, you can ask us via our project inbox: naturescalendar@woodlandtrust.org.uk

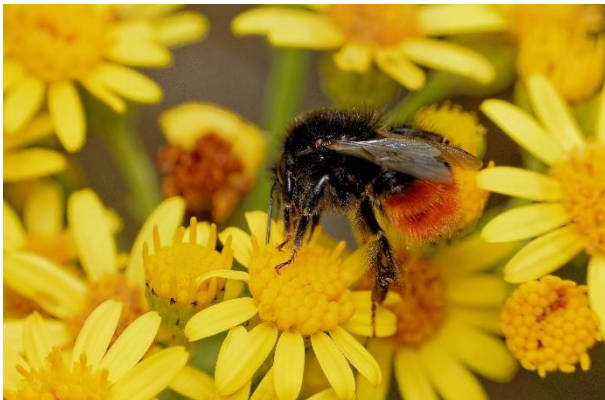
We hope you are enjoying seeing the first signs of spring, the warmer and brighter days and we look forward to receiving your records!

Best wishes,
Alex and the Nature's Calendar team.



Credit: Laurie Campbell WTML

Your records



Credit: Jean-Noel Copie WTML

Twice a year we publish seasonal reports based on your records. Can you remember what the weather was like this time last year and how plants and animal were responding?

Our [seasonal reports](#), which are downloadable from our website, help to answer these questions, and shed light on any emerging trends within the Nature's Calendar dataset or any record-breaking spring and autumnal dates.

[Here's a summary of the spring 2025 report:](#)

Following a warm and wet spring in 2024, spring 2025 was, overall, warm but dry. It was an early spring for wildlife, with the UK average date for all seasonal events recorded in spring 2025 coming in early compared to the baseline year, with the exception of the first recorded red-tailed bumblebee.

During 2025, Nature's Calendar volunteers from all over the UK recorded an impressive 16,466 observations, monitoring 94 different spring seasonal events.

The first spring sighting of frogspawn was the most popular event to record, with 695 records received, followed by ‘snowdrop first flowering’ (464 records) and the first spring sighting of a peacock butterfly (438 records). Hawthorn was the most frequently recorded tree species.

2025 also saw some record-breaking average dates. The earliest on record average chiffchaff arrival date was recorded last spring, as well as the earliest average blue tit first feeding young date, first recorded orange-tip butterfly, and first flowering of horse chestnut and oxeye daisy.

You can keep track of records in real time as they [appear on our live maps](#), and when logged into the Nature’s Calendar website, your record will appear as a red dot on the map!

What to look out for in the coming months

In April and May almost every species included in Nature’s Calendar has an event to look out for, here’s a few suggestions:



Credit: Kylie Harrison Mellor WTML

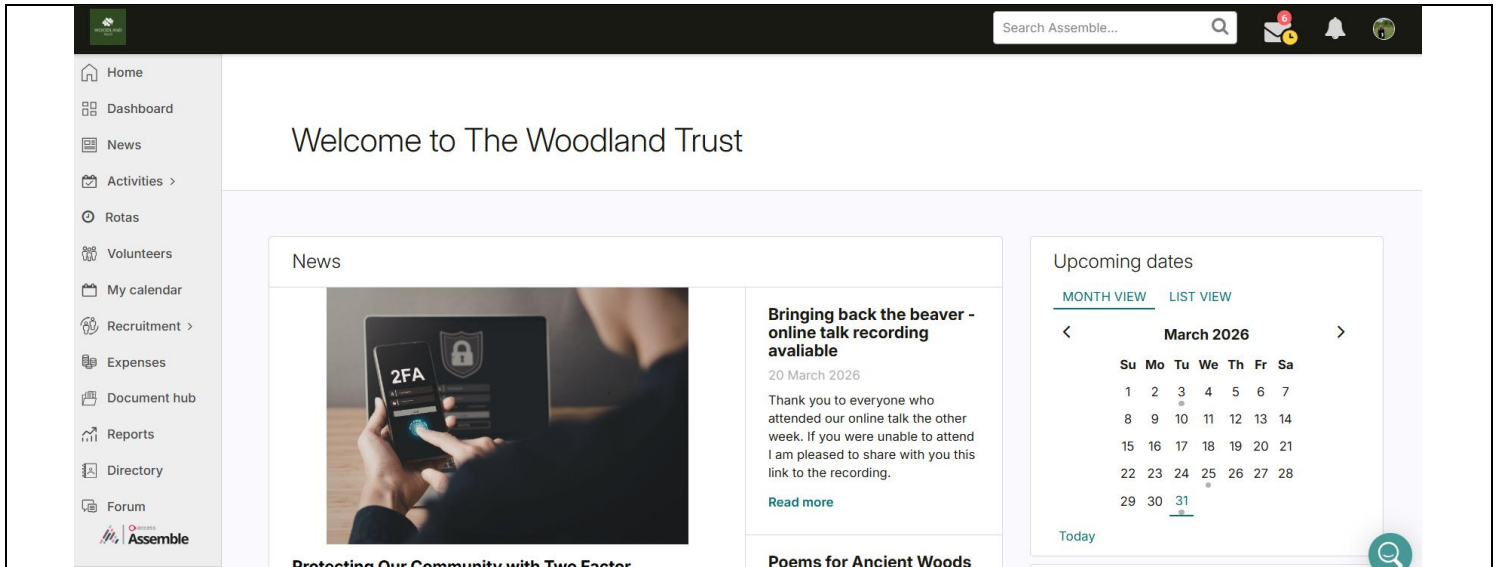
- First leaf on an elder, hawthorn, silver birch or pedunculate oak tree (these records will contribute to the [State of UK Climate report](#))
- First flower on a hawthorn or horse chestnut tree (these records contribute to the UK [spring index](#))
- First seen orange-tip butterfly or swallow (these records contribute to the UK [spring index](#))
- Any oak-related records (surprisingly, we have low numbers of oak tree records)
- First flowering bluebell
- First seen juvenile blackbird
- And lots more!

[Download our phenology calendar here](#) to see the full list of species to look out for based on the time of year.

A heads-up about your profile on our volunteer’s platform.

[Assemble](#) is the Woodland Trust’s volunteer’s website, you will have received an email within a month of registering for Nature’s Calendar, inviting you to log into the platform. Assemble is a secure location where all volunteering information is kept.

All communication about your volunteering role with Nature’s Calendar will come from the Woodland Trust through Assemble. You can also use Assemble to access news articles, here is a screenshot of what the volunteer website looks like:



Each year, we are required to check that all of our volunteer profiles in Assemble are for people who are actively volunteering. Therefore, if you have **not** added a record to the Nature's Calendar website in the past 12 months, your **Nature's Calendar recorder role** will be removed from your **Assemble profile**. Don't worry, if you add a record again at a later date, we will re-activate your role on your profile on Assemble, and if you have other volunteering roles with us, they will not be impacted by this check.

Your [Nature's Calendar account](#) will also be unaffected by this, and your records will not be deleted. The only impact of not having added a record in the past 12 months would be that the Nature's Calendar role on your Assemble profile will become 'inactive', and that means you will not receive Woodland Trust communications about your volunteering role to your email inbox.

If you are actively recording on Nature's Calendar, you will automatically have an Assemble profile, as the platform is our secure volunteering database. Please note that recording of seasonal signs will still take place on the Nature's Calendar website as before.

If you have any questions please don't hesitate to email us at naturescalendar@woodlandtrust.org.uk

